

V-link Dynamometer

Ver. 1.2



- Highly accurate and reliable, $\pm 0,2\%$ FS accuracy.
- Very clear red digit LED display. Visible at long distances / in bright daylight.
- IP Class 67. Ideal for wet environments.
- Robust high strength steel construction for use in hostile environments.
- Supplied with full certificate of calibration.
- Delivered in hard case made from hard ABS plastic.
- Designed and manufactured in Denmark for high quality assurance.
- Bluetooth versions allow long-range (Class 1) and short-range (Class 2) communication with cloud service for data logging.

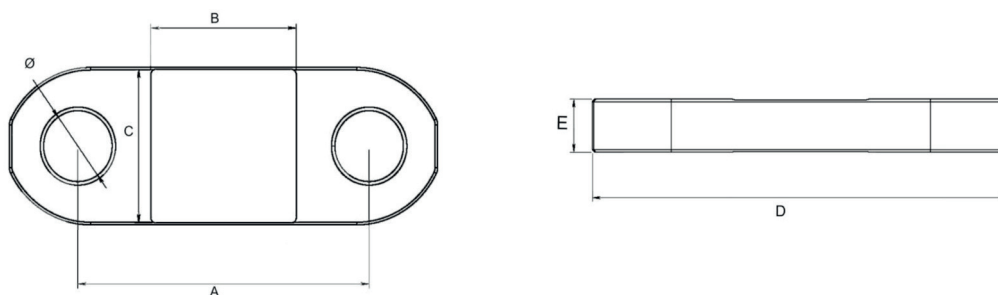


Specifications							
Standard versions	670301*	670601*	671201*	672501*	675501*	-	-
Bluetooth versions	670302 (HT)*	670602 (HT)*	671202 (HT)*	672502 (HT)*	675502 (HT)*	6710002HT	6712002HT
Capacity	3.25T	6.5T	12.5T	25T	55T	100T	120T
Accuracy (%)	+/- 0.2% FS						
Accuracy (Kg.)	+/- 7,5 Kg.**	+/-15 Kg.**	+/-30 Kg.**	+/-50 Kg.**	+/-120 Kg.**	+/-200 Kg.**	+/-250 Kg.**
Safe overload (%)	110%						
Safe overload (Kg.)	3575 Kg.	7150 Kg.	13200 Kg.	27500 Kg.	60500 Kg.	132000 Kg.	132000 Kg.
Breaking limit	500%						
Resolution	1 Kg.	5 Kg.	10 Kg.	10 Kg.	20 Kg.	-	-
Material	High strength steel housing. Fe/Zn12 Chromit surface treatment according to ISO 2081						
IP class	IP 67						
Display	Bright LED						
Digit height	14 mm						
Digit color	Red						
Operating time	16-20 hours (Operating at low temperatures will decrease the operating time)						
Operating temp.	-20°C til +50°C**						
Batteries	Built-in Li-ion						
Charger	High quality USB charger						

* (HT) indicates the dynamometer can be purchased with an optional handheld display

** Rounded due to display resolution.

Item No.	Capacity (T)	A (mm)	B (mm)	C (mm)	D (mm)	E (mm)	Ø (mm)	Weight (Kg)	Incr. (Kg)
670301* / 670302 (HT)*	3.25T	200.00	112.00	90.00	210.00	15.00	20.00	1.55	1
670601* / 670602 (HT)*	6.5T	200.00	115.00	117.00	260.00	41.50	31.00	4.47	5
671201* / 671202 (HT)*	12.5T	230.00	115.00	117.00	281.00	41.50	37.30	5.65	10
672501* / 672502 (HT)*	25T	230.00	115.00	117.00	338.00	41.50	54.00	7.56	10
675501* / 675502 (HT)*	55T	282.00	115.00	155.00	440.00	46.00	73.00	16.93	50
6710002 HT	100T	300.00	115.00	155.00	500.00	75.00	102.00	39.00	100
6712002 HT	120T	300.00	115.00	155.00	500.00	75.00	102.00	39.00	100



Vetec A/S - Teknikvej 69 - DK-5260 Odense S - Denmark - SE/CVR-no. 27414621

Mail: post@vetec.dk - Phone: 0045 6590 5802